

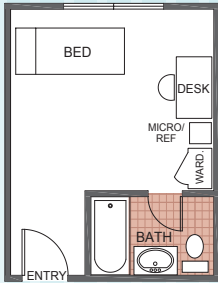
# THE AXIS



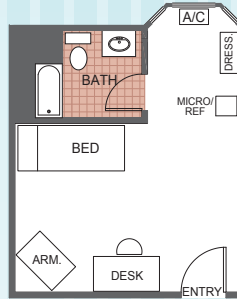
All inclusive University City living.

# Floorplans

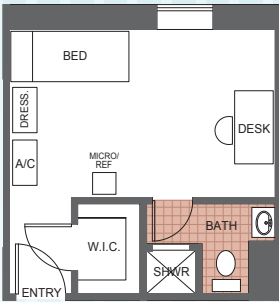
**Single Classic**  
12' x 15'6"



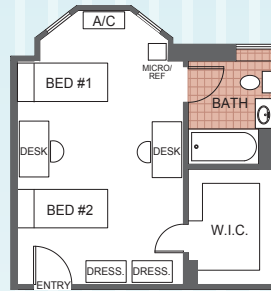
**Single Plus**  
13' x 15'6"



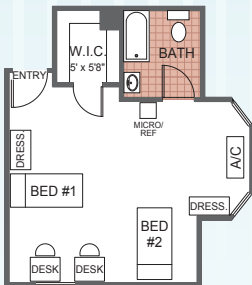
**Single Deluxe**  
18' x 14'



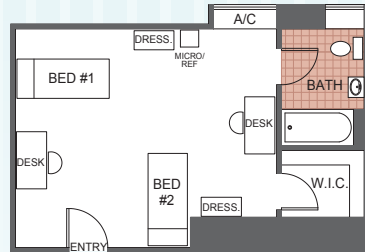
**Double Classic**  
18' x 19'



**Double Plus**  
18' x 21'



**Double Deluxe**  
24' x 15'



\*Floorplans not to scale. Details vary from residence to residence and are not necessarily built exactly as indicated above.

LOVE WHERE YOU LIVE!

# The Axis on 36th Street

The Axis offers you an incredibly convenient location, flexible leasing terms and a vast array of amenities and services at reasonable prices. Seconds away from your classes at the University of Pennsylvania and Drexel University, you will find plenty of things to do in your free time, such as eateries, shopping and theaters. Join the Resident Advisors and other students for game events, movie nights, cultural dances and other social opportunities.

## Apartment Features

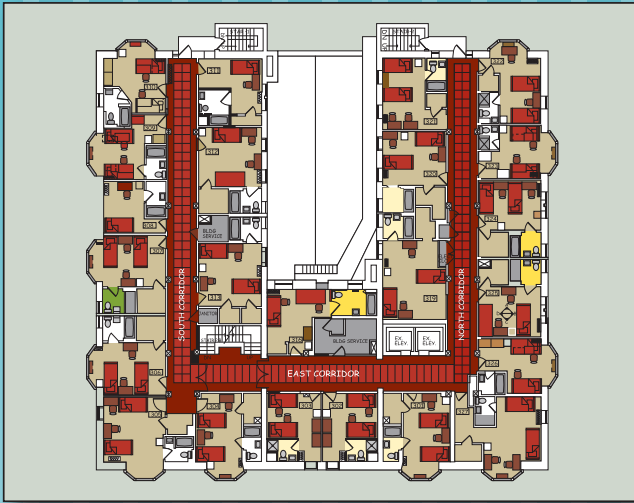
- All utilities included
- Fully furnished rooms
- Free weekly in-room housekeeping
- Private bathroom
- Each room has its own 32" flat screen TV
- Cable TV & Wi-Fi included
- Walk-in closets
- Additional storage
- Wall-to-wall carpeting
- Microwave
- Refrigerator

## Community Amenities

- Between Penn & Drexel campuses
- Near restaurants & shopping
- Fitness center
- Business center
- On-site laundry
- Theater room
- Game room
- Fully equipped kitchen
- Housekeeping services
- On-site Resident Advisors
- Social events
- Restricted entry
- Public transportation
- Axis Pizza on-site (Open 24 hours, room service available)



# Community Map



## Directions

**From New Jersey TP:** Take **Exit 4** toward **NJ-73 N**. Keep right at the fork, follow signs for **NJ-73** & merge onto **NJ-73 N**. Slight left at **NJ-90 W** (signs for **Betsy Ross Bridge**). Keep left at the fork, follow signs for **I-95 S / Central Phila**. Merge onto **I-95 S**. Take **Exit 22** toward **I-676 W / US-30**. Merge onto **Vine St. Expy**. Continue onto **I-676 N**. Keep right at the fork, follow signs for **I-76 E / International Airport**. Take **Exit 345** toward **30th St. / Market St**. Turn right at **Arch St.**, turn left & becomes **N 30th St**. Turn right at **Market St**. then turn right onto **N 36th St**.

**From Delaware:** **I-95 N** via ramp to **Del Memorial Bridge / Wilmington**. Take **Exit 13** to merge onto **PA-291 E** toward **I-76 W / Valley Forge**. Take **Exit 13** to merge onto **PA-291 E** toward **I-76 W / Valley Forge**. Turn left at **S 26th St**. Take the ramp onto **I-76 W**. Take **Exit 345** toward **30th St**. Turn left at **Market St**. then turn right onto **N 36th St**.



**Altman**  
MANAGEMENT COMPANY  
[www.altmanco.com](http://www.altmanco.com)



## The Axis on 36th St.

20 S. 36th Street  
Philadelphia, PA 19104  
(p) 215.662.0802 • (f) 215.662.0804  
[axisleasing@altmanco.com](mailto:axisleasing@altmanco.com)